



713 W. Duarte Rd Suite#G-188 Arcadia, CA 91007
Tel. 626-442-5588



Initial Setup for Wireless IP Networking Camera (NC1000-W10)

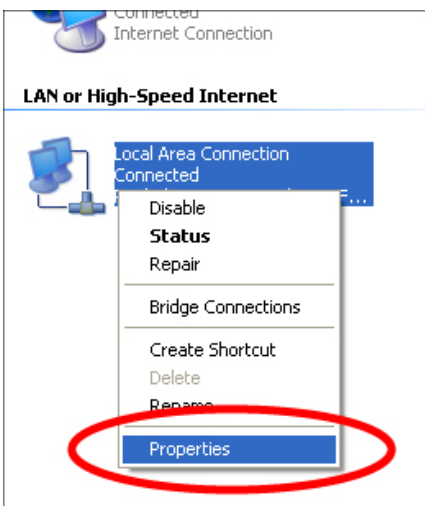
1. Please reset the camera to factory default by pressing the button in the hole to the left of the lens. Make sure the power is on, and then hold the button for 10 seconds.



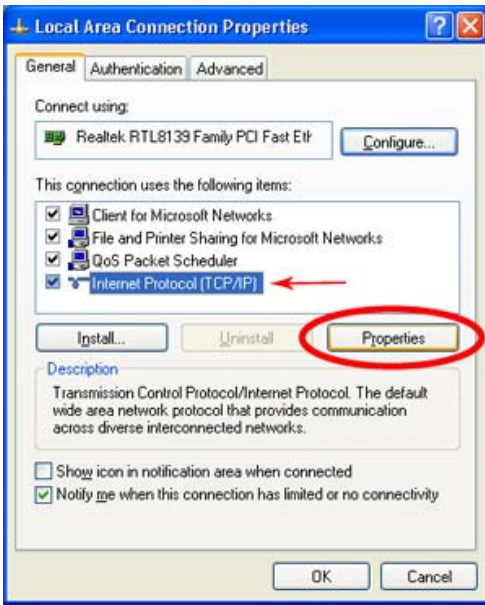
2. Once it has been reset, connect the camera to your computer using the cross-over (gray) cable.
3. Make sure your computer is set to obtain an IP address automatically.



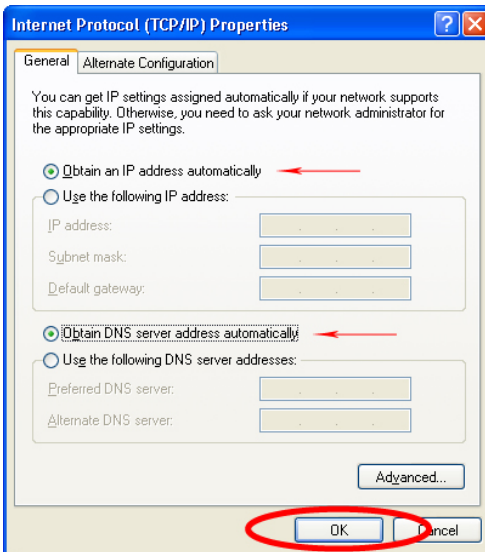
Right click on "My Network Places" on your desktop and choose "Properties".



Right click on "Local Area Connection" and choose "Properties".



Highlight "Internet Protocol (TCP/IP)" and click on "Properties".



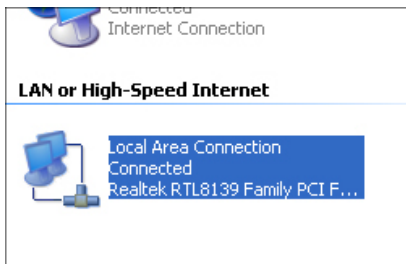
Choose "Obtain an IP address automatically" and "Obtain DNS server address automatically". When you are done, click OK to save the settings.

4. Wait for a couple minutes while your computer detects a new IP. The new IP should be 169.254.x.x (x can be any number).
-

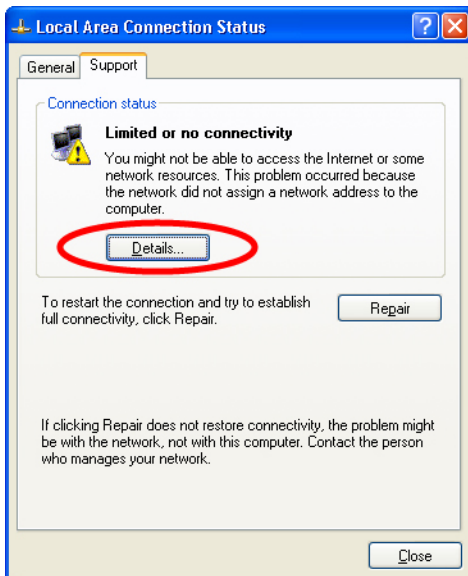
To check your IP address:



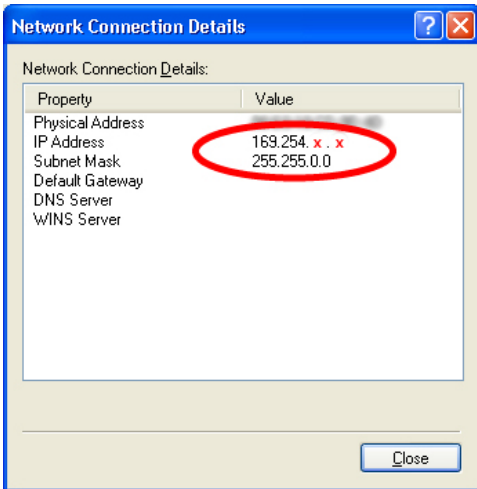
Right click on "Local Area Connection" and choose "Properties".



Double click on "Local Area Connection".



Click on the "Support" tab, then "Details".

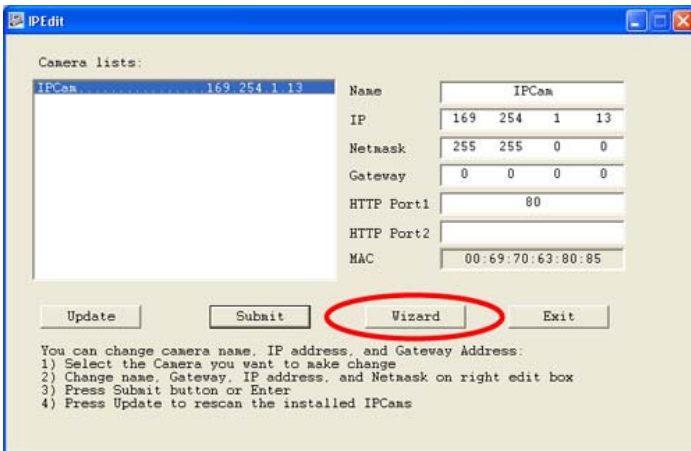


x can be any number.

5. Once your computer has an IP address, run the IPEdit program to search for the camera.

For NC1000-L10 wired camera, you can use the IPEdit to configure your camera.

For NC1000-W10 wireless camera, please click on wizard to configure your camera.



When a camera shows up on the list, its IP address should be 169.254.1.13. Highlight the camera, then click on "Wizard".

6. Through the wizard, you can set the camera to your own settings. Once your camera is connected wirelessly, the WLAN LED will start flashing.